



Regional Shoreline Adaptation Plan

An implementing project of **BAY ADAPT**

The Regional Shoreline Adaptation Plan

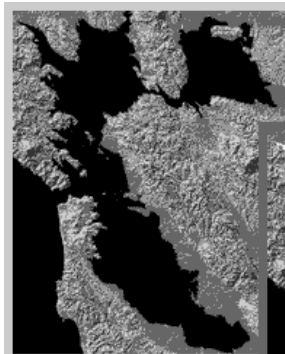
Jessica Fain
Director of Planning, BCDC



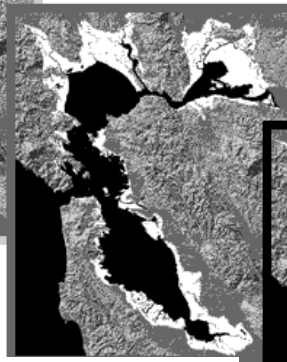


About BCDC

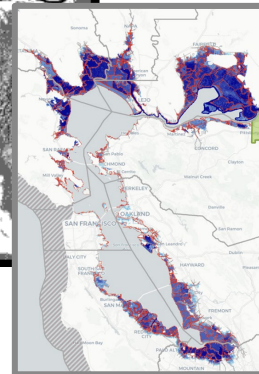
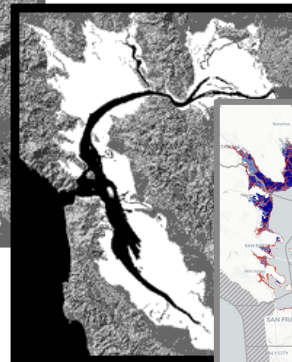
The San Francisco Bay Conservation and Development Commission protects and enhances San Francisco Bay and advances the Bay's responsible, productive, and equitable use for this and future generations as we face a changing climate and rising sea levels.



The Bay in 1849



Bay fill in 1965



Sea level rise of 6 feet by...



No matter where you live, shoreline flooding will impact everyone in the Bay Area

What's at risk? (40-100 years)

5 million daily highway vehicle trips

60,000 daily rail commuters

28,000 socially vulnerable residents

13,000 existing housing units

104,000 existing jobs

20,000 acres of depressional wetlands, lagoon and tidal marsh habitat

70,000 new, planned housing units

85,000 new, planned jobs

12 wastewater treatment plants



2/3 of California's sea level rise impacts will be felt in the Bay Area

No matter where you live, shoreline flooding will impact everyone in the Bay Area

How Much Will it Cost?

Adaptation Needs

\$110 billion¹

Estimated cost of sea level rise adaptation through 2050 (in Year of Expenditure dollars)

- **\$52 billion:** Estimated cost for known or planned projects
- **\$54 billion:** Estimated placeholder cost for areas with adaptation needs
- **\$3 billion:** Estimated additional sediment management needs³

Cost of Inaction

\$230+ billion²

Estimated value of a subset of assets at risk through 2050

**The cost of inaction is far higher than the cost of adaptation.
We stand to lose much more if we do not act**

¹ In year of expenditure (YOE) dollars. ² In 2022 dollars. ³ Estimate developed by BCDC and SFEI analysis.

The background of the slide is a scenic photograph of a coastal area. In the foreground, there are lush green trees and a wooden deck with several potted plants. In the middle ground, a large suspension bridge with two tall towers spans across a body of water. The sky is clear and blue. The overall scene is bright and sunny.

Why do we need plan regionally for sea level rise adaptation?

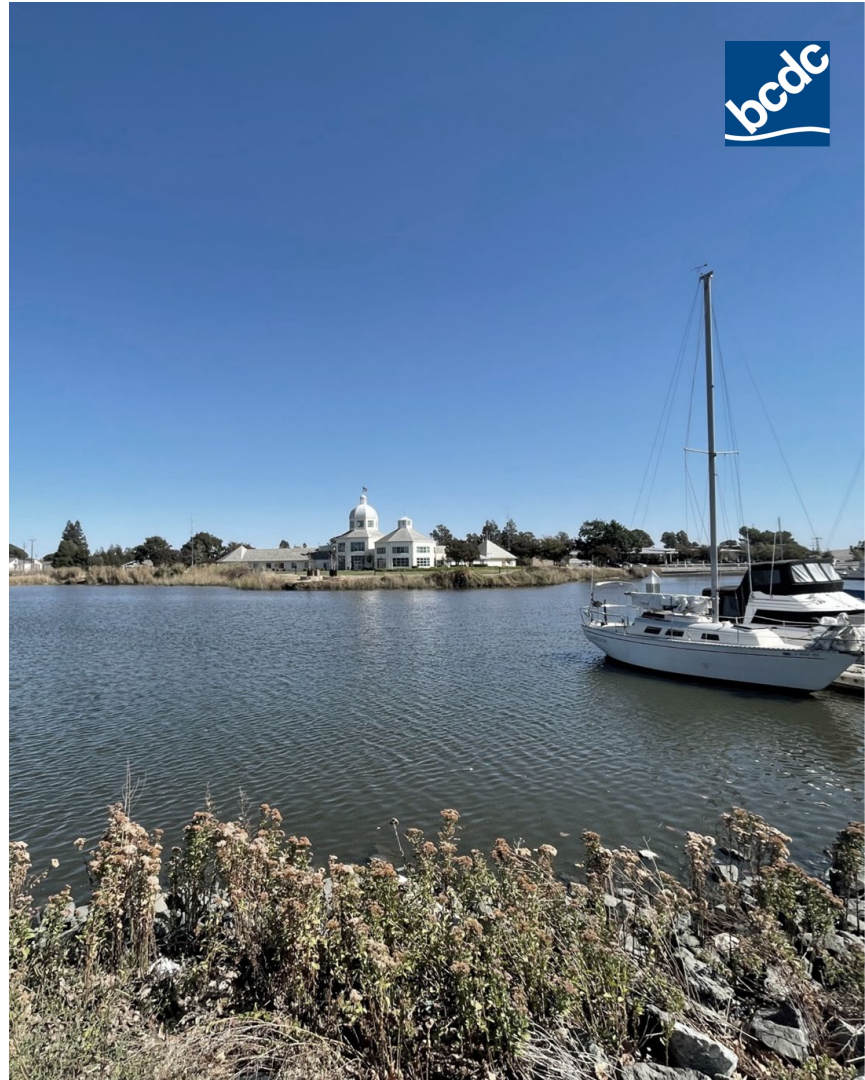
- **Coordinated** adaptation
- Priority resources to **frontline communities**
- Long-term **health of wetlands**
- **Strategic** implementation
- Common **standards and methods**
- Pipeline of **funding**
- Track and **measure progress**





New legislation to support sea level rise adaptation (SB 272, 2023)

- Mandates local jurisdictions to develop “**San Francisco Bay subregional resiliency plans**” and for BCDC to develop guidelines that those plans must follow
- Requires BCDC to review - and **approve or deny** - plans based on consistency with guidelines
- **Prioritizes State funding** to create plans and for projects in approved plan jurisdictions
- Guidelines to be adopted by BCDC by **12/31/2024**





Regional Shoreline Adaptation Plan:

One Bay Vision,
Strategic Regional Priorities,
and Subregional Shoreline
Adaptation Plan Guidelines
*Draft for Public Comment
(September 2024)*



San Francisco
Bay Conservation
and Development
Commission (BCDC)

What is the Regional Shoreline Adaptation Plan?

A region-wide plan for the Bay shoreline that guides the creation of coordinated, locally-planned sea level rise adaptation actions that work together to meet regional goals. It contains:

- ✓ One Bay Vision
- ✓ Strategic Regional Priorities
- ✓ Guidelines for Subregional Shoreline Adaptation Plans



OCEAN
PROTECTION
COUNCIL



Coastal
Conservancy



Regional Shoreline
Adaptation Plan
An implementing project of BAY ADAPT





Many voices have shaped this draft



- **6** Advisory Group meetings
- **40+** Subcommittee meetings
- **6** Local Electeds Regional Task Force
- **3** Bay Adapt Implementation Coordinating Group
- **6** BCDC Commission meetings
- **6** Rising Sea Level Commissioner Working Group meetings
- **2** Design Review Board
- **2** Engineering Criteria Review Board
- **10** Community events
- **1** Online survey
- **1** Public workshop
- **4** Focus Groups
- **5** Local workshops
- **1** Practitioner workshop
- **4** Conferences
- **9**-County local elected road show
- **4+** Interagency Meetings
- **1** Tribal consultation



Bottom three photos by Karl Nielson.





The RSAP is designed to drive effective local adaptation

- ✓ Flexible
- ✓ Aligned
- ✓ Right-Sized
- ✓ Building on Existing Efforts
- ✓ Effective



Regional Shoreline
Adaptation Plan
An implementing project of BAY ADAPT



REGIONAL ONE BAY VISION

As sea levels rise, the Bay Area's diverse communities come together to transform how we live, work, plan, and adapt along our changing shorelines...

Communities are healthy and vibrant.

Healthy Baylands ecosystems thrive.

Places are designed for changing shorelines.

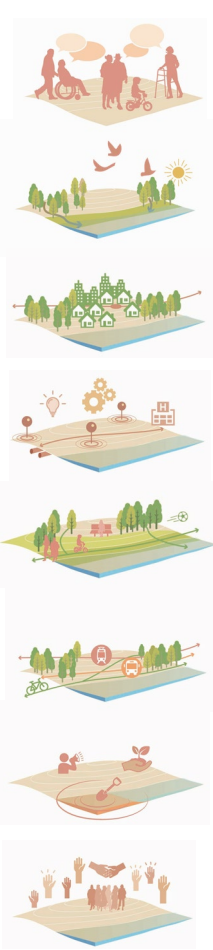
Critical services are reliable.

The Bay shoreline is accessible to all.

Safe and reliable transportation connects us all.

People and ecosystems are safe from contamination risks.

Regional collaboration drives efficient and effective adaptation.

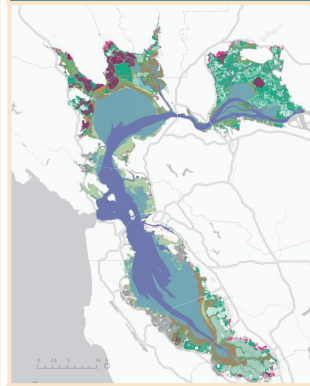


Strategic Regional Priorities to be solved together

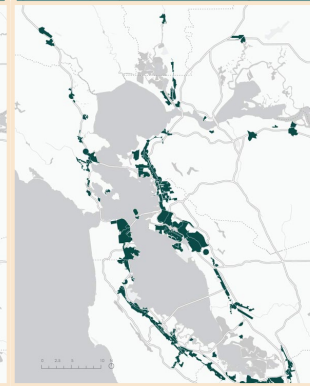
Reduced
involuntary
displacement
risk



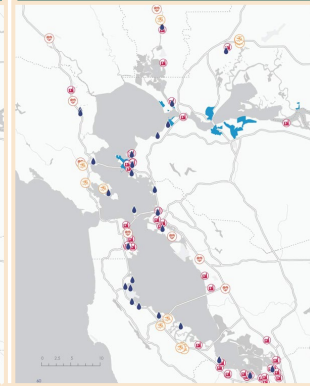
Complete and
connected
ecosystems



Safe and strategic
growth and
density



Reliable critical
and emergency
services



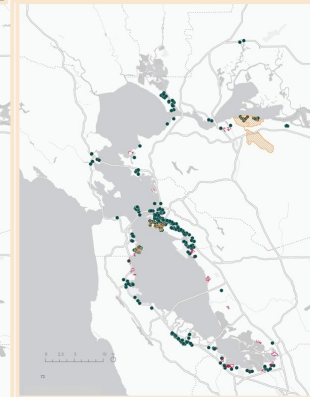
Connected
regional shoreline
access



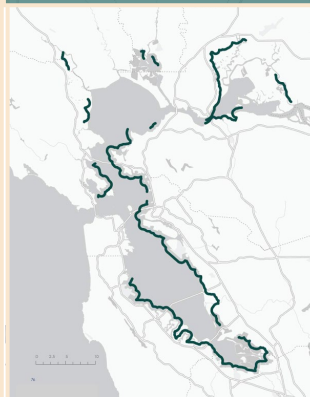
Regional
movement of
people and goods



Reduced
contamination in
EJ communities



Cross-
jurisdictional flood
risk reduction



Subregional Shoreline Plan Guidelines

Possible Scale / Leads

- County Plan
- Single Jurisdiction Local Plan
- Multi-Jurisdictional Local Plan
- Combo

Lots of flexibility in how to create your plans with and across jurisdictions

Plan Requirements

- Vulnerability Assessment
- Adaptation Strategies
- Land Use & Policy Plan
- Implementation Plan
- Project List

Lots of flexibility to use and build upon what's already done

Submission and Adoption

- Local adoption
- Incorporated with local plans
- Submit to BCDC for approval
- Eligible for prioritized funding

Public process that maximizes coordination and transparency

Subregional Shoreline Adaptation Plan Guidelines

Minimum Standards



Coastal Flood Hazards and
Sea Level Rise Scenarios
Standards

- ✓ Sea level rise inundation
- ✓ 100-year storm surge
- ✓ Shallow and emerging groundwater
- ✓ 0.8 ft, 3.1 ft, 4.9 ft, and 6.6 ft scenarios



Minimum Categories and
Assets Standards

- ✓ Required assets (certain data available by BCDC)



Equity Assessment Standards

- ✓ Equity-focused responses across the plan elements
- ✓ Maximize benefits of water-dependent shoreline uses and Baylands habitats




Adaptation Strategy Standards

- ✓ Improve community health, economic development, infrastructure and housing needs
- ✓ Create pathways to respond to changing flood risks over time



What's Next

- **Now:** Sea Level Rise Planning Grants available from Ocean Protection Council! 
 - **Public Comment Period: Ended 10/18**
 - **November 22:** Final Draft RSAP released
 - **December 5:** Anticipated BCDC Vote
 - **2025+: Local Govt' Assistance Program** to help plans get developed; **Ongoing regional collaboration**
- | | |
|--------------------|----------------------------------|
| ✓ Mapping Platform | ✓ Resources |
| ✓ Template | ✓ Shoreline Leadership Academies |



Apply for Funding!



Learn more about the SB1 Grant Program by scanning the QR code or following this link:

<https://opc.ca.gov/sb-1-funding/>

Stay Involved

Learn more & sign up for our newsletter at

www.bayadapt.org

Jessica Fain

Director of Planning

Jessica.Fain@bcdcc.ca.gov