



Storms, Flooding, and Sea Level Defense Conference 2024

The Propeller Club of Northern California



PORT OF OAKLAND

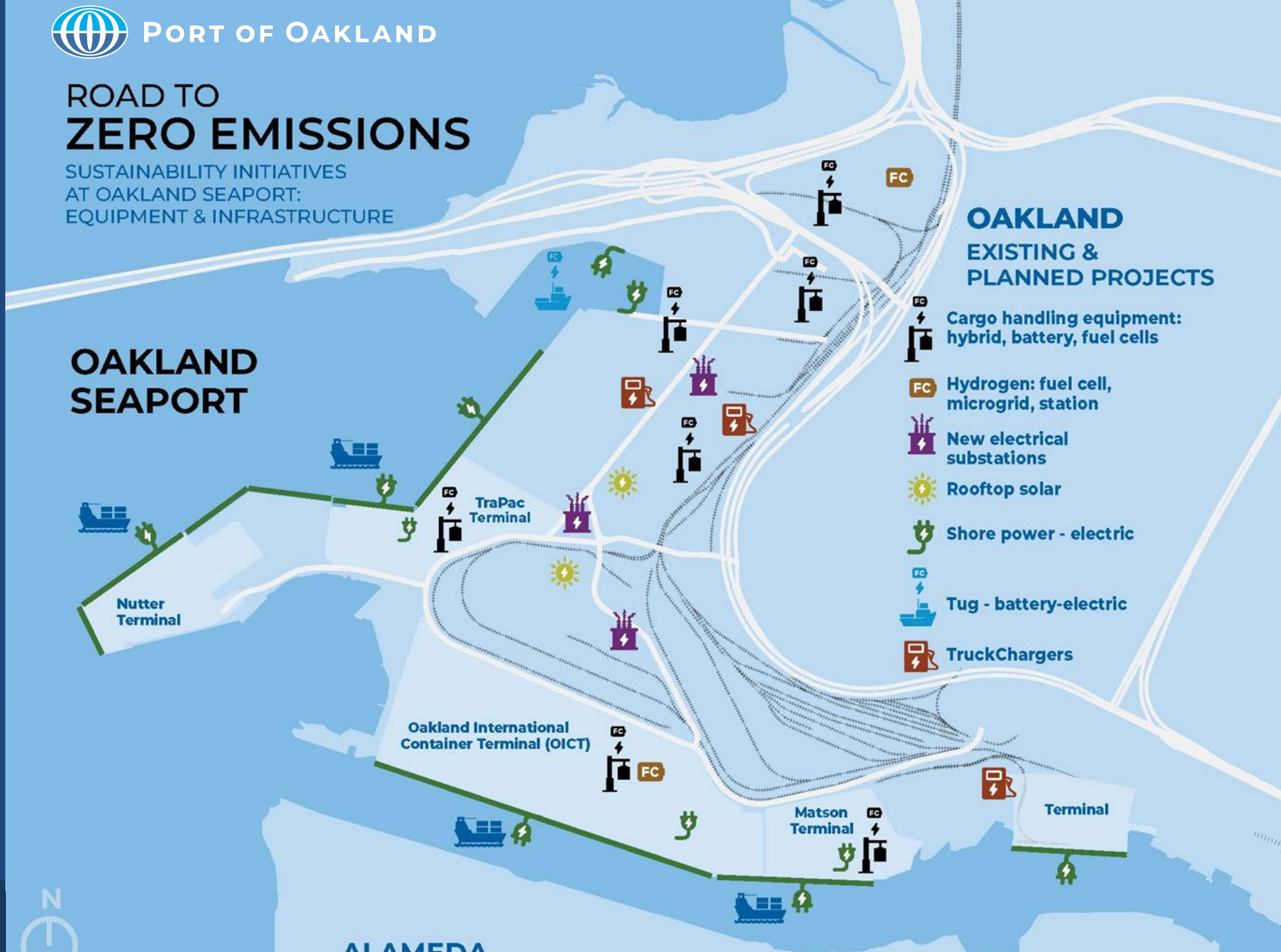
- Seaport
- Airport
- Commercial Real Estate
- Utilities



ROAD TO ZERO EMISSIONS

SUSTAINABILITY INITIATIVES
AT OAKLAND SEAPORT:
EQUIPMENT & INFRASTRUCTURE

OAKLAND SEAPORT



OAKLAND EXISTING & PLANNED PROJECTS

-  Cargo handling equipment: hybrid, battery, fuel cells
-  Hydrogen: fuel cell, microgrid, station
-  New electrical substations
-  Rooftop solar
-  Shore power - electric
-  Tug - battery-electric
-  TruckChargers



EPA Clean Ports Program - \$322 Million

Project Partners:



- 475 Drayage Trucks
- 188 Cargo Handling Equipment
- Community Engagement
- Fenceline Air Quality Monitoring Program
- Workforce Development
- Trucker Loaner Program



**PORT OF OAKLAND
SAN FRANCISCO BAY
OAKLAND INTERNATIONAL AIRPORT
ROAD TO
ZERO EMISSIONS**

SUSTAINABILITY INITIATIVES
AT OAKLAND INTERNATIONAL AIRPORT:
EQUIPMENT AND INFRASTRUCTURE

**OAKLAND
EXISTING & PLANNED PROJECTS**

-  Electric Bus Charging Depot
-  Sustainable Aviation Fuel
-  Vehicle Charging Stations
-  400 Hz Ground Power
-  Pre-Conditioned Air
-  Electric Ground Support Equipment & Charging Stations
-  Solar Panels
-  Fuel Cell Power
-  Battery Energy Storage System
-  New/Replacement Electrical Substation
-  Electric Car Rental

ALAMEDA

SAN LEANDRO



Driving Innovation: Oakland Zero Emissions Symposium



GRANT FUNDING PROGRAMS

Grant Program	Grant Amount	Project Concept	Awarded?
NOAA Climate Resilience Regional Challenge -	Up to \$1M	Rising Seas and Oakland's Frontline Communities: Adaptation Planning for Neighborhood-Led Resiliency (Segment 3: Central Oak/Bay Front)	NO
EPA Environmental Justice Government-to-Government Program (EJG2G) -	\$1M	Rising Seas and Oakland's Frontline Communities Adaptation Planning for Neighborhood-Led Resiliency (W. Oak) Conduct vulnerability assessment that primarily focuses on modeling projected Sea Level Rise (SLR) and Groundwater Intrusion (GWI).	NO
DOT Promoting Resilient Operations for Transformative, Efficient, and Cost-Saving Transportation (PROTECT) Program	\$4M	Planning Grant: Rising Seas and Oakland's Frontline Communities: Adaptation Planning for Neighborhood-Led Resiliency (E. Oak) Conduct vulnerability assessment that focuses on modeling projected SLR and GWI levels for East Oakland adjacent to the airport.	NO
Caltrans Sustainable Transportation & Climate Adaptation Planning Grant	\$3M	Rising Seas and Oakland's Frontline Infrastructure and Communities: Climate Adaptation Planning for Neighborhood-led Resiliency. SLR and GWI Modeling @ Seaport, Commercial Real Estate, Airport, Oakland Frontline Communities	YES!!!

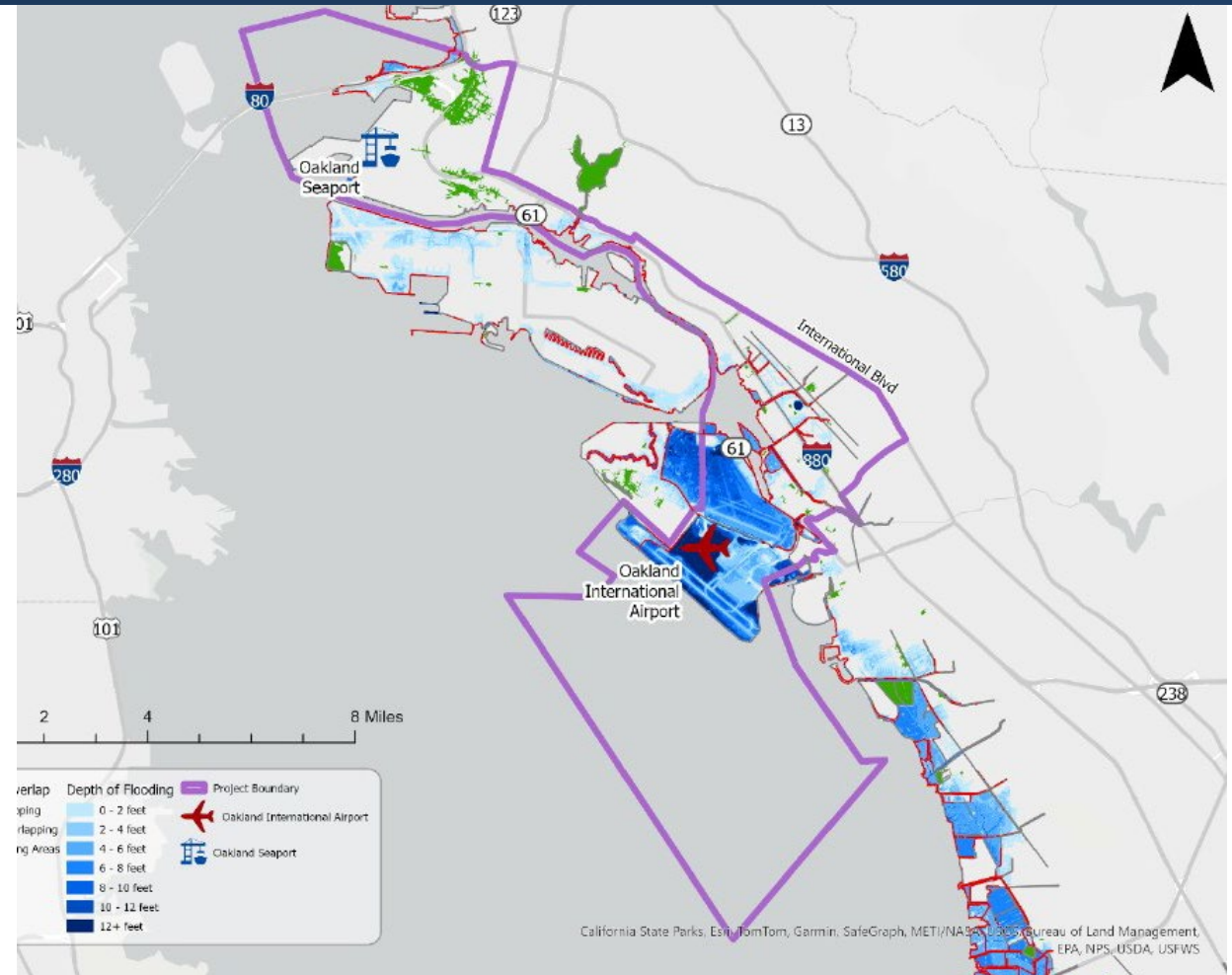
CLIMATE ADAPTATION PLANNING FOR OAKLAND'S FRONTLINE COMMUNITIES (CAPOFC)



- **Sea Level Rise**
- **Groundwater Intrusion**
- **Study into Oakland Frontline Communities**

CAPOFC Scope of Work

- Significant Community Engagement in Study Area
- Desktop Review and Historical Evaluation (Existing Conditions)
- Tidal Flooding Inundation Assessment
- Groundwater Intrusion Modeling
- Vulnerability Assessment
- Adaptation Plan
- Incorporation in OAAC Subregional Adaptation Plan



Sustainability Management Plan



Air Quality

Climate Resilience

Energy Source

Environmental
Justice/Social
Responsibility

Purchasing/
Materials

Transportation

Waste Management

Water Conservation
and Water Quality

Wildlife
Conservation



PORT OF OAKLAND

THANK YOU!

Colleen Liang
Director of Environmental Programs and Planning
510-627-1198
cliang@portoakland.com

