



**The Port
OF HUENEME**

We Make Cargo Move

Storms,
Flooding &
Sea Level
Defense

November
2024



PORT OF HUENEME

New Milestones

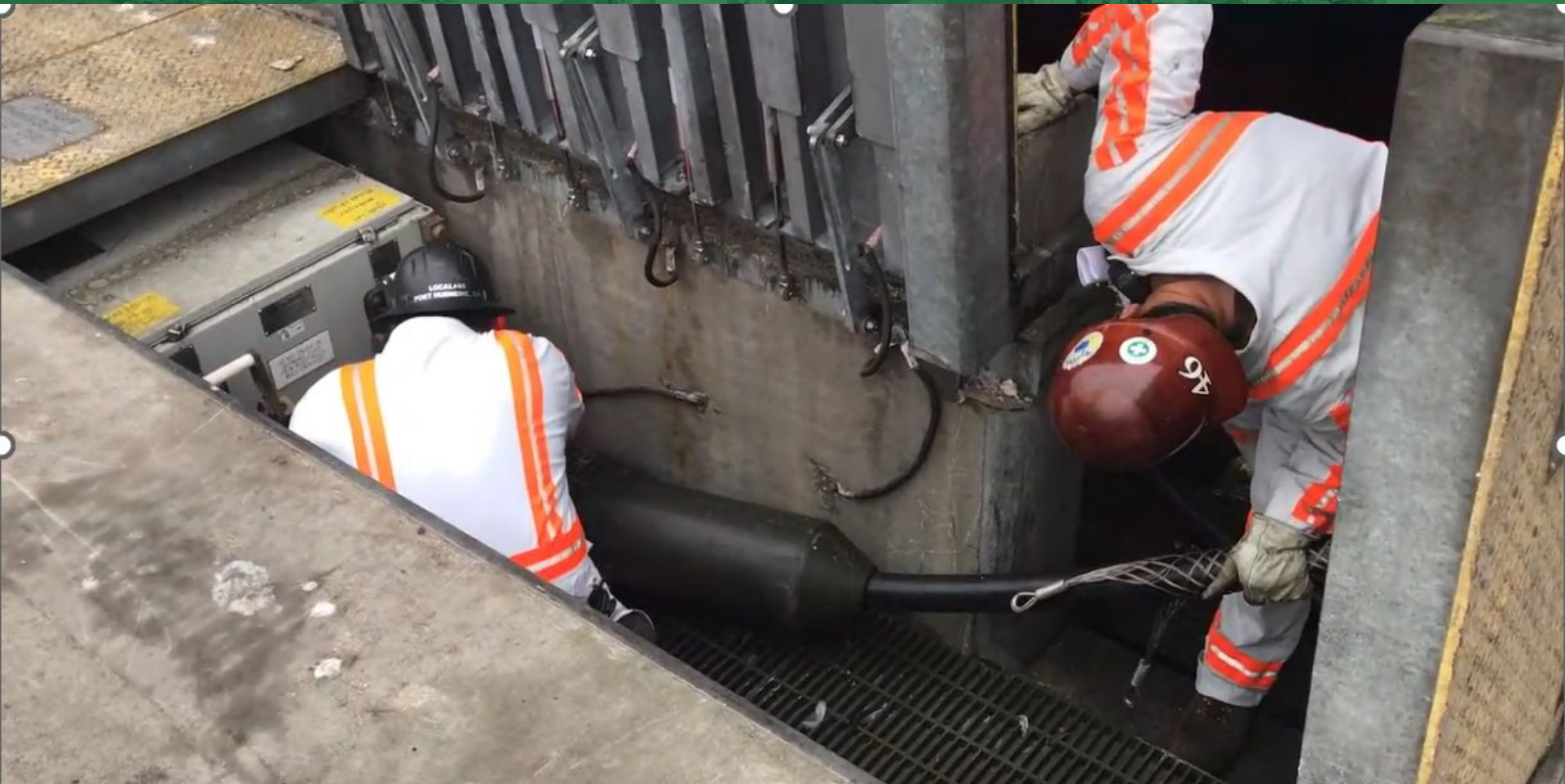
WOW!



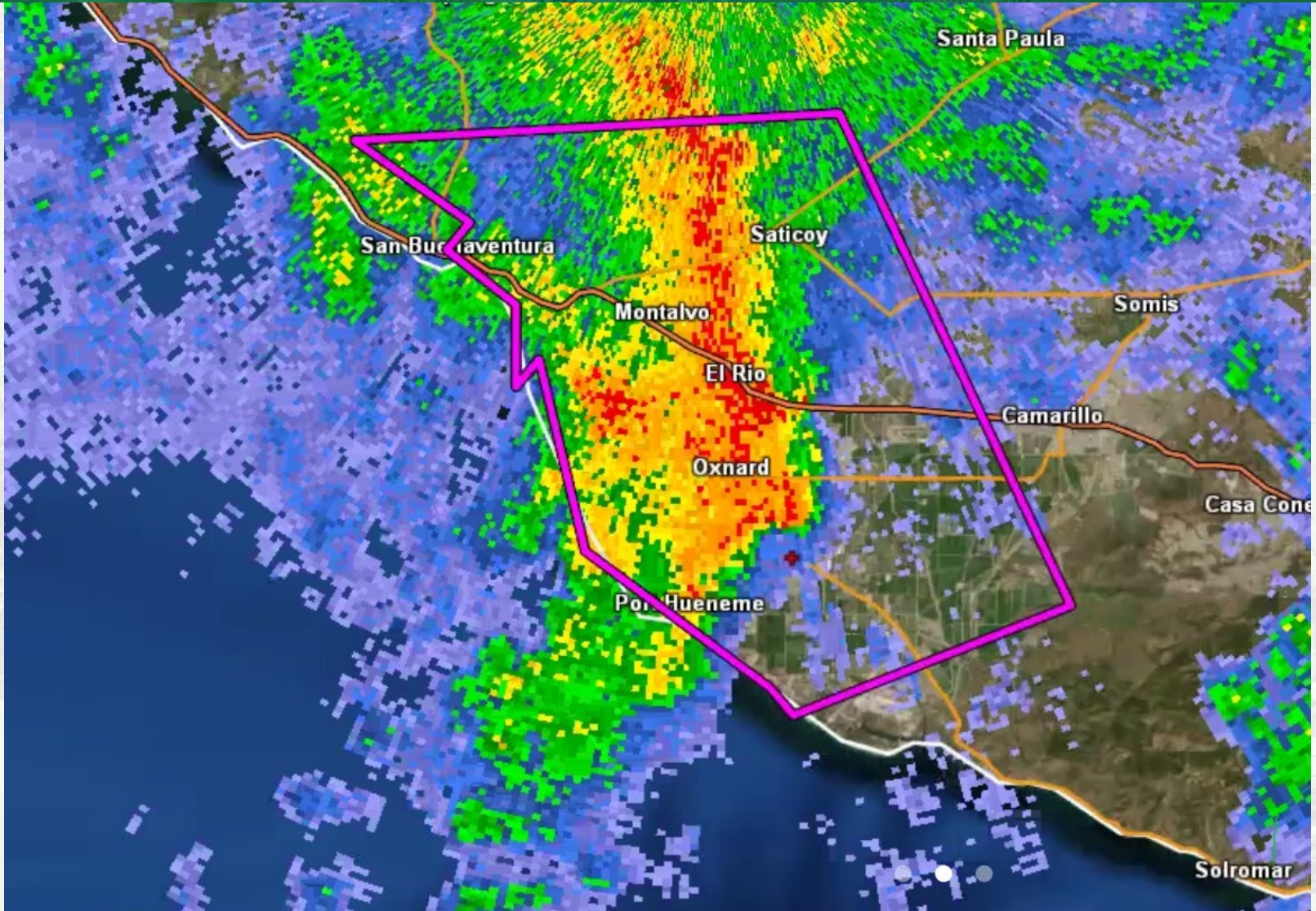
- \$16+ BILLION IN CARGO ANNUALLY
- #1 WEST COAST BANANA PORT
- #4 CALIFORNIA CONTAINER PORT
- #6 WEST COAST CONTAINER PORT
- #5 US MARKET SHARE FOR REFRIGERATED CARGO
- #16 US CONTAINER PORT
- #6 US AUTO PORT
- TOP 10% OF US PORTS FOR AUTOS AND FRESH PRODUCE

EMBRACED SHORESIDE POWER EARLY

- BUILT IT ON TIME / PRIORITIZED COMPLIANCE
- INNOVATIVE AND FOUND THE \$14M (*only had \$4M unrestricted cash*)
- COMMISSIONED: NOV 2013
- CUSTOMERS USE: JAN 2014
- OPERATIONAL FOR ALL CONTAINER SHORESIDE CAPABLE VESSELS



December 21st 2023



December 21st 2023

UNPRECEDENTED PORT HUENEME RAIN STORM

“The frequency of this kind of event is on the order of once in every thousand years,” meteorologist **Mike Wofford with the National Weather Service** in Oxnard said of the storm.

“This is likely the heaviest rainfall that has been observed in this area in recorded history and is likely a multi-centennial kind of event,” Daniel Swain, a climate **scientist with UCLA**, said during a briefing

Los Angeles Times

NOAA Atlas 14 – 60 minute 1,000 year storm event = 1.80” rain
December 21 Storm - in 45 minutes = 3+” rain

PORT PROPERTY- SHORE POWER SUB-STATION

DECEMBER 21ST



Clara Street Inundation

DECEMBER 21ST



PORT PROPERTY- SHORE POWER SUB-STATION

DECEMBER 21ST



PORT PROPERTY- SHORE VAULT

DECEMBER 21ST

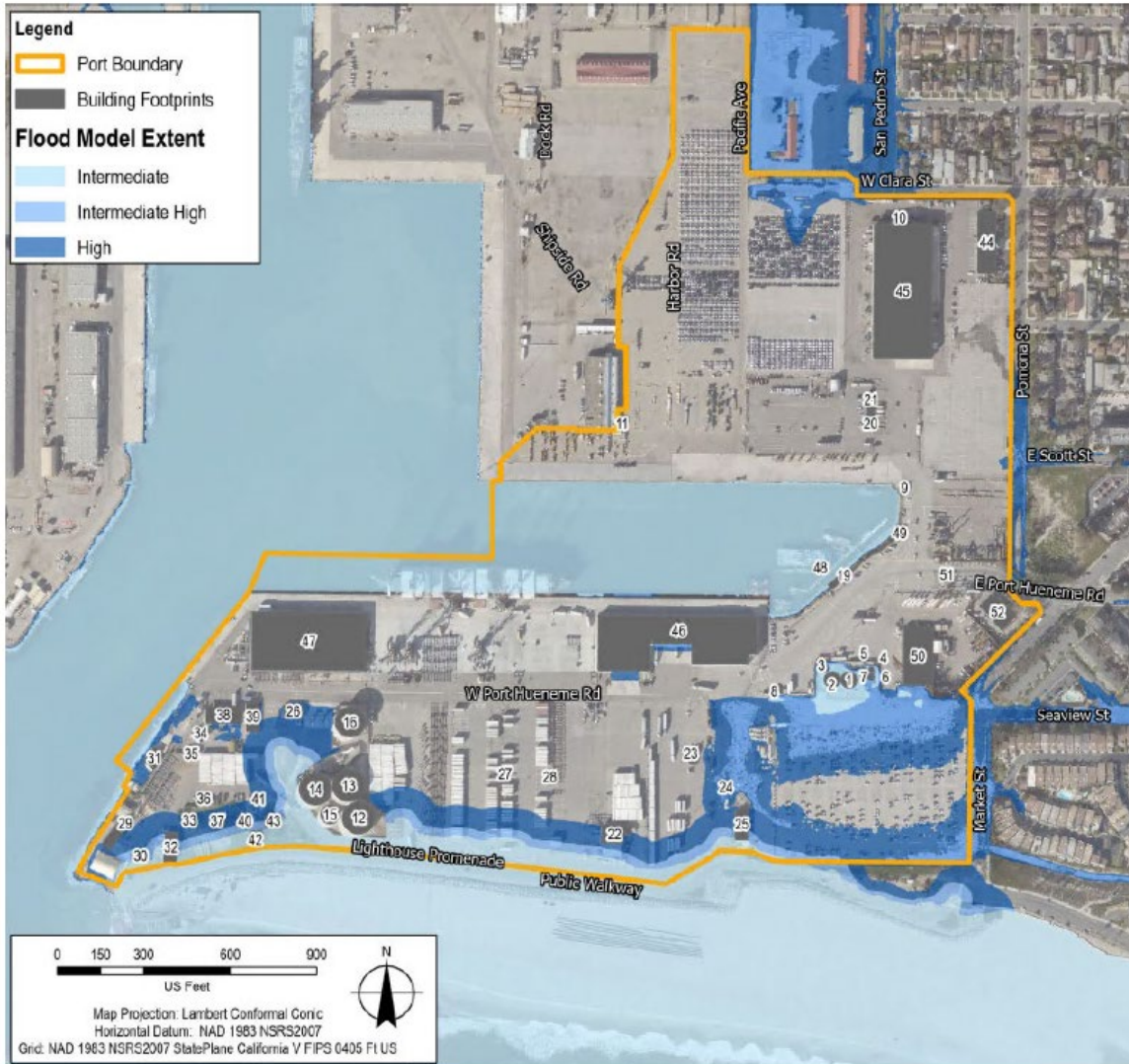


STORM DAMAGE IN THE COMMUNITY

DECEMBER 21ST



SLR & Flood Planning Ongoing



SLR & Flood Planning Ongoing

