

# San Francisco Bay Nature Based Solutions Examples and Considerations

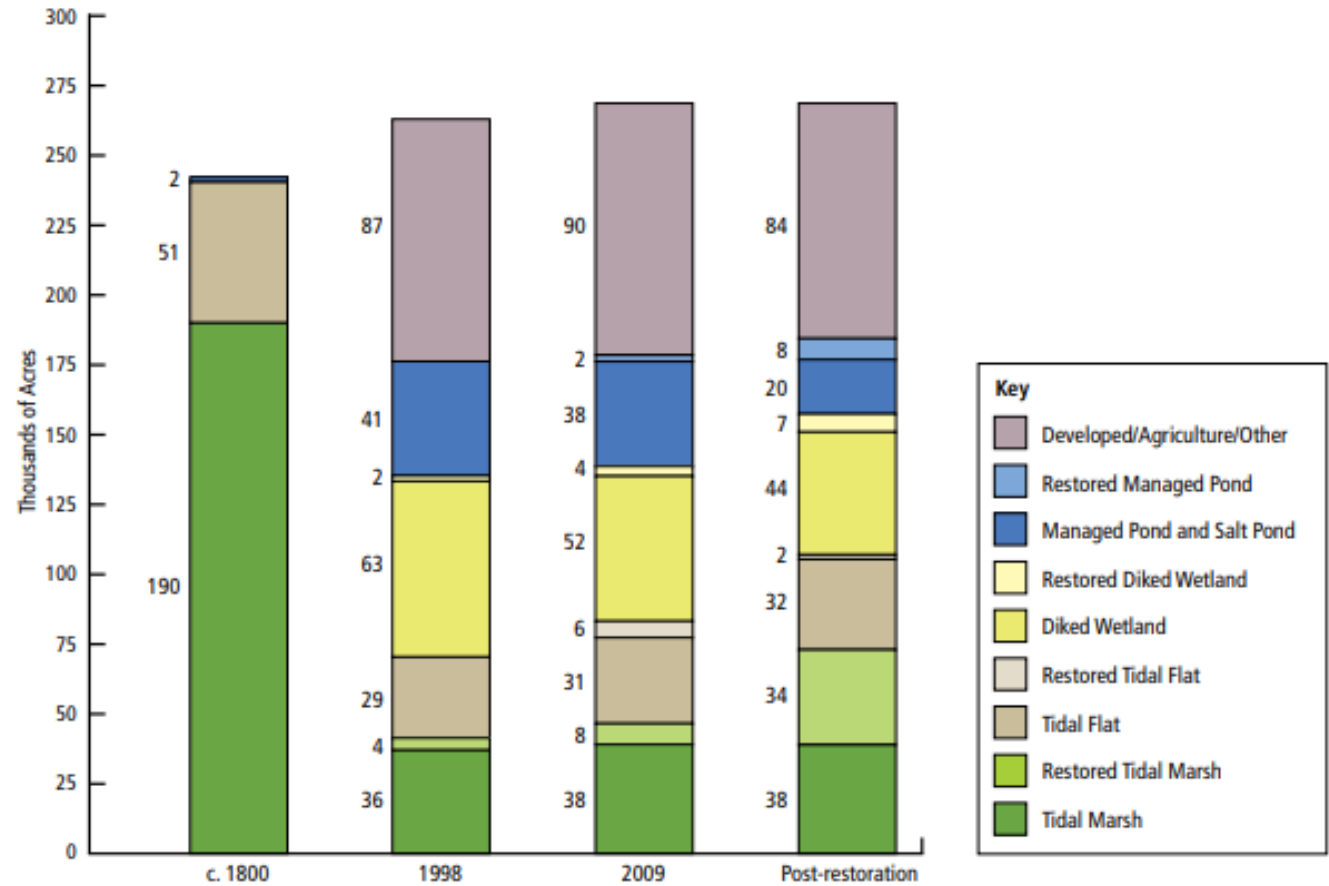
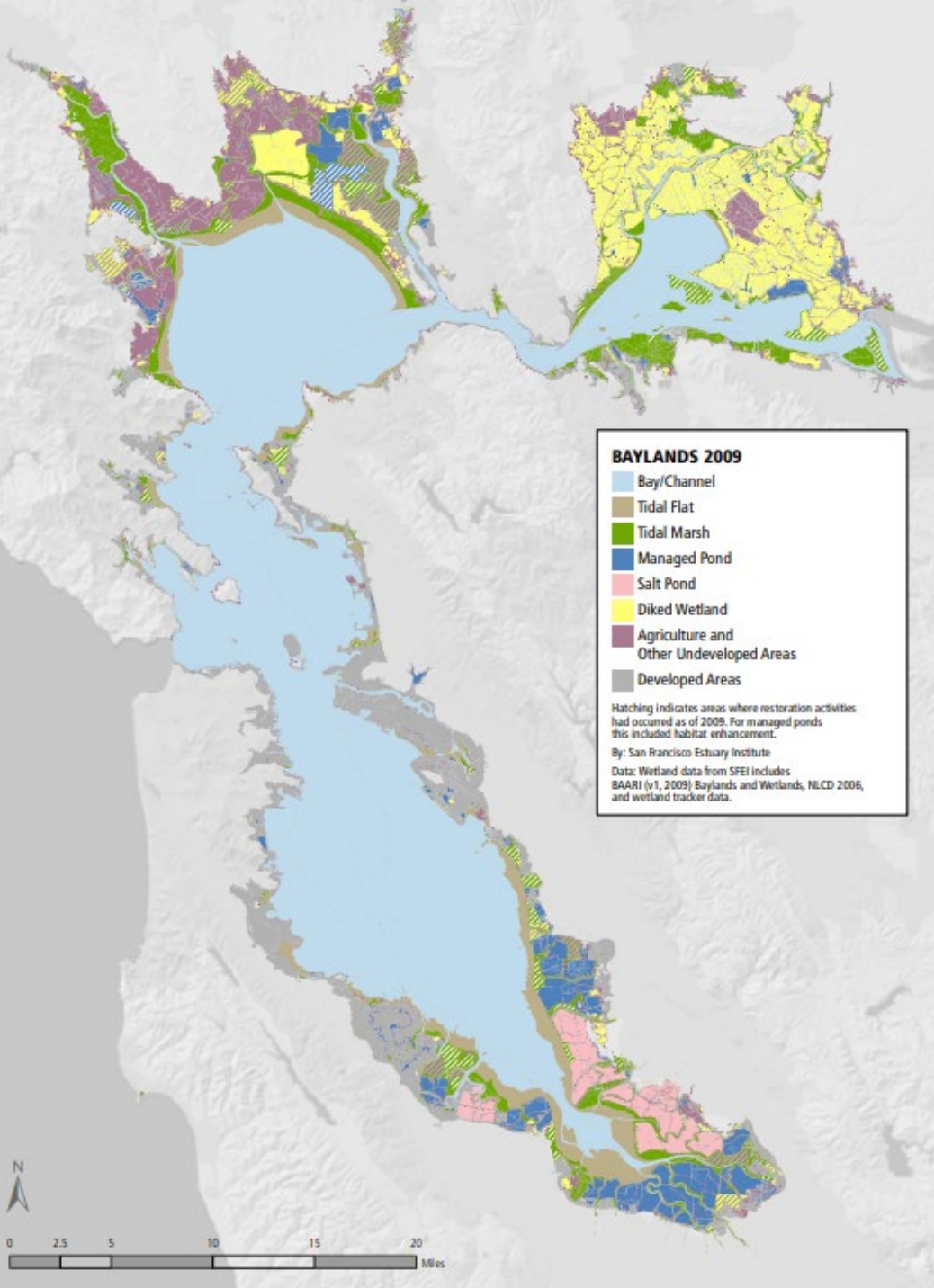
Propellor Club  
November 12, 2024  
Brenda Goeden, Sediment Program Manager



SF Bay Conservation and Development Commission  
Regional Sediment Management Program

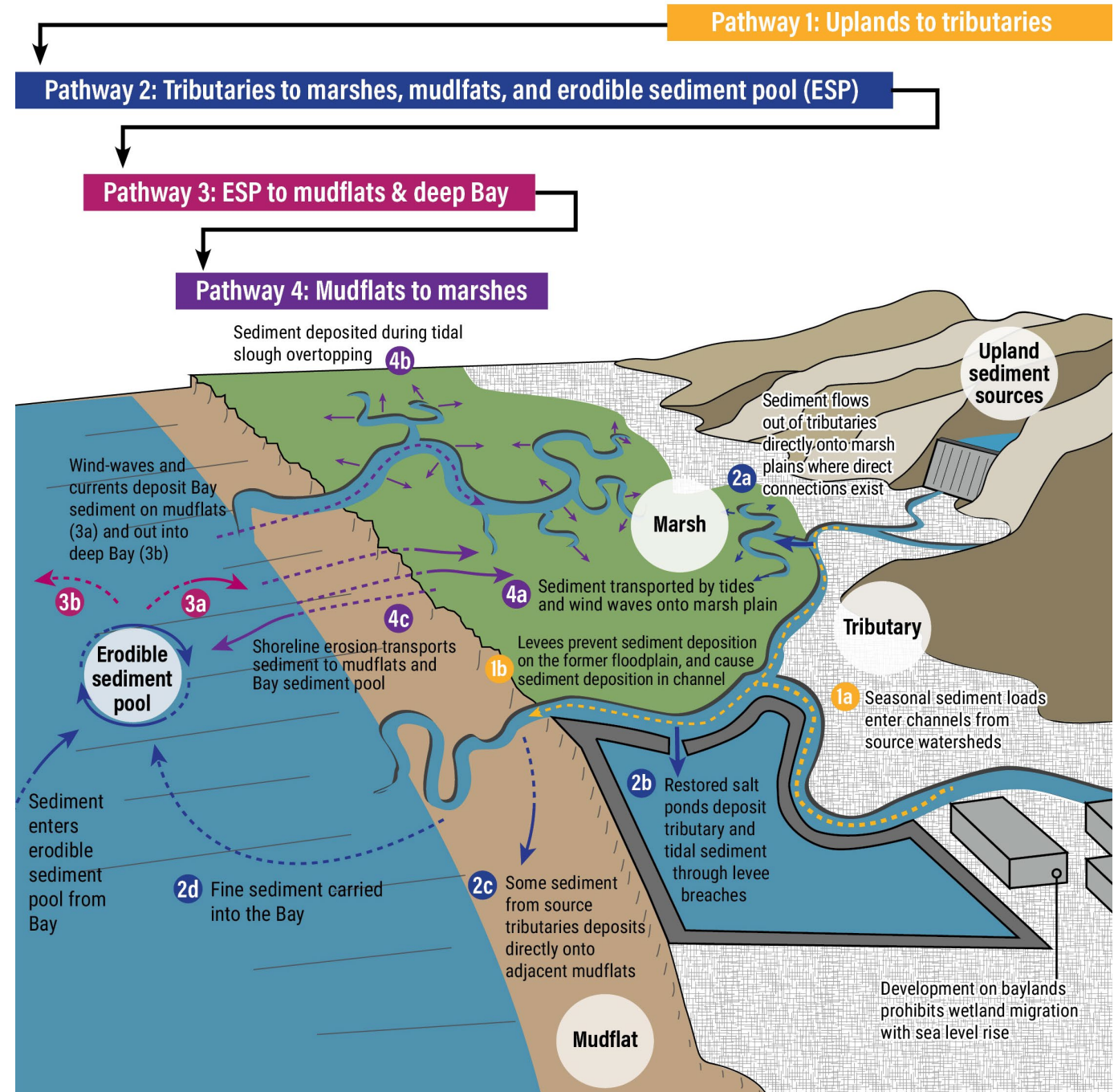


# Wetlands of the Bay Area



Goals Project,, California State Coastal Conservancy, 2015

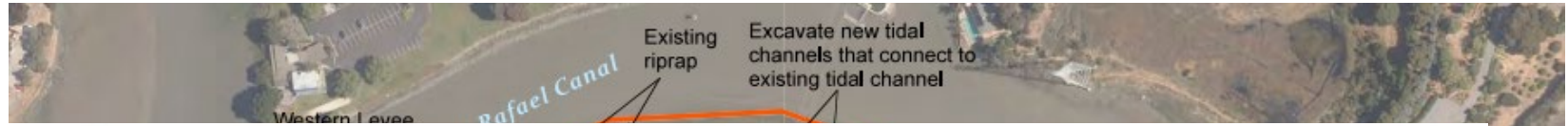
# Sediment Transport Mechanisms to Marshes



# Working to Save Wetlands with Erosive an Edge: Gravel Beaches and Groins



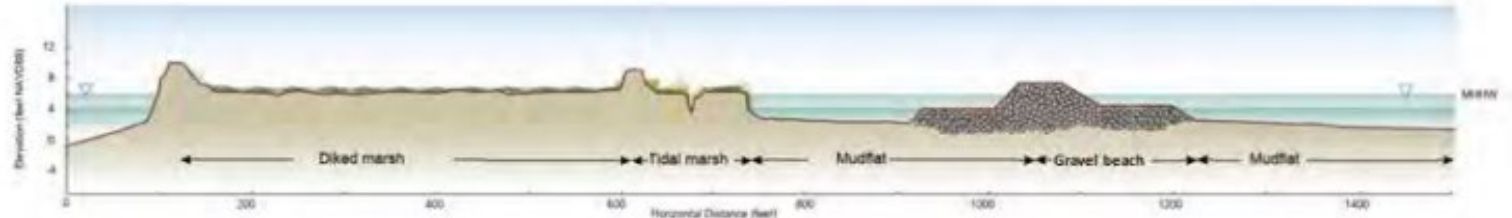
# Dredged Sediment, Berms, and Rerouting Water



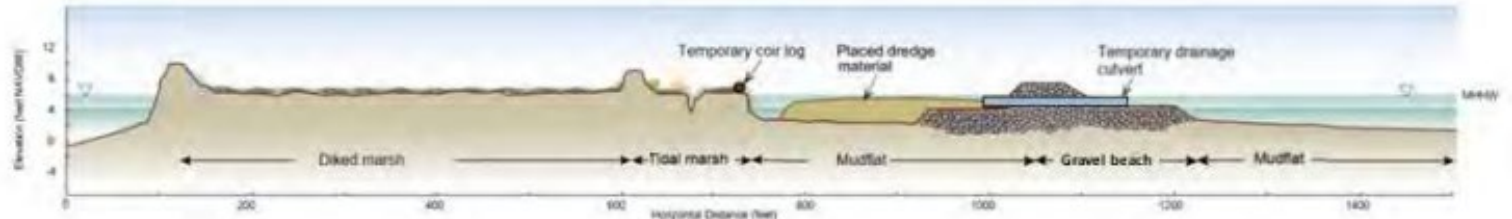
Existing Conditions



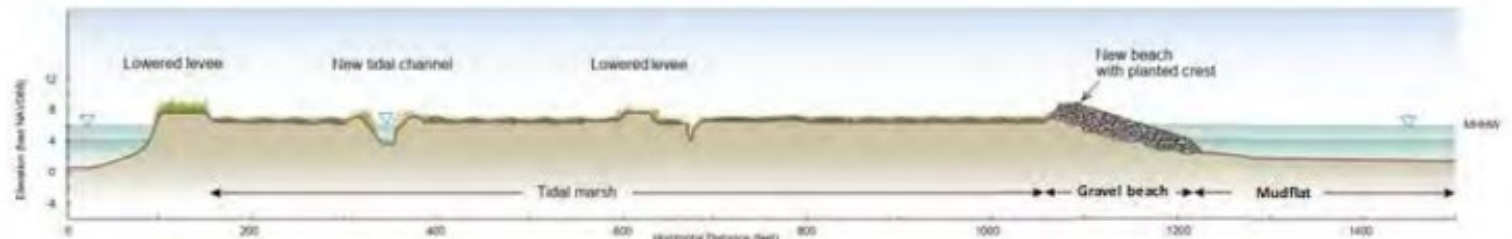
Interim Conditions  
Beach Construction  
(Phase 2)



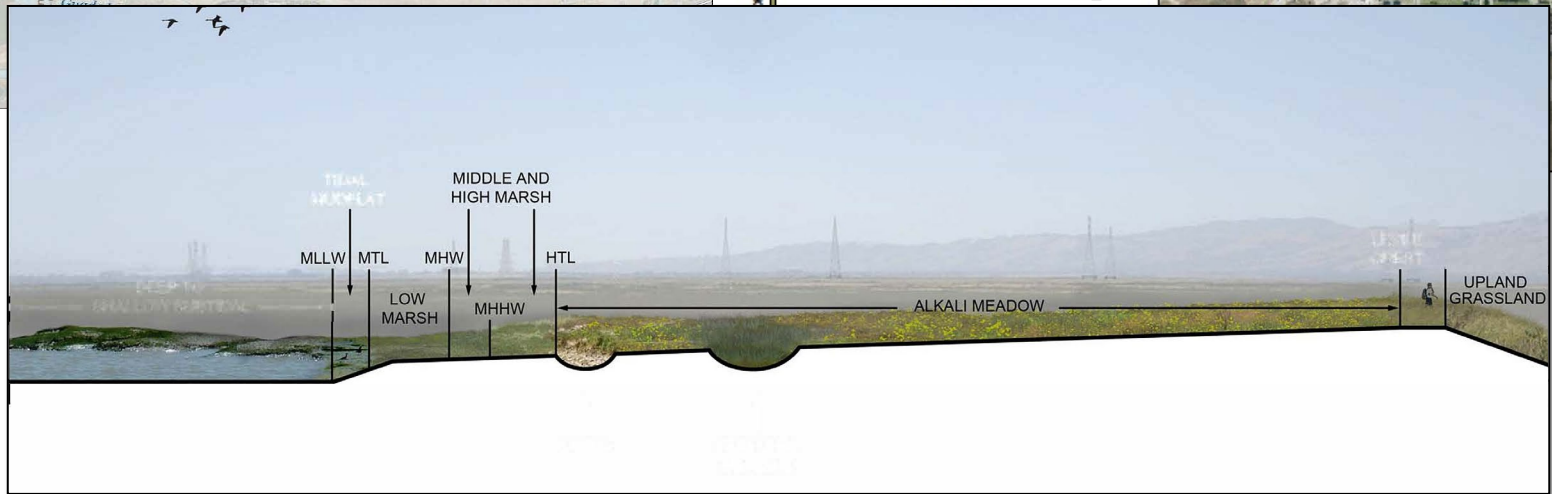
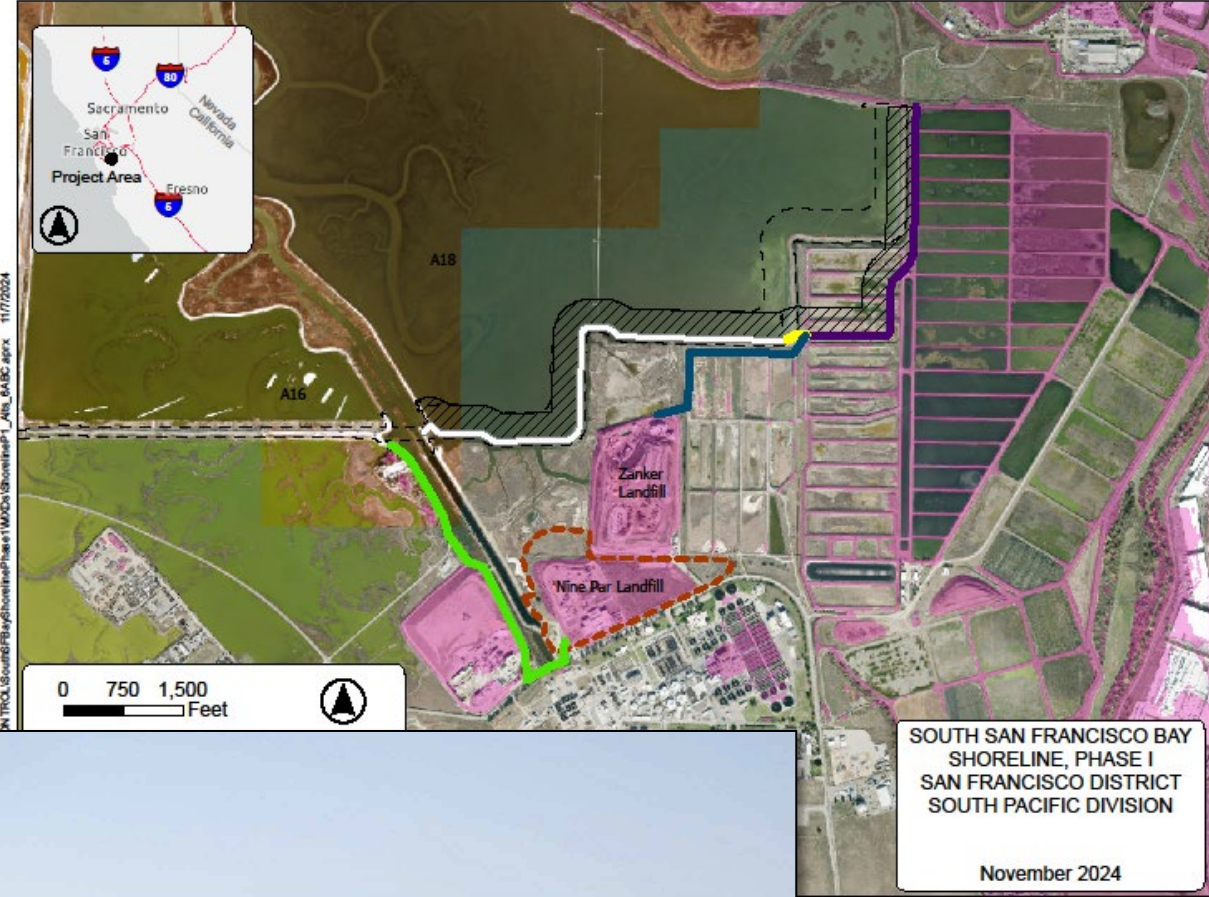
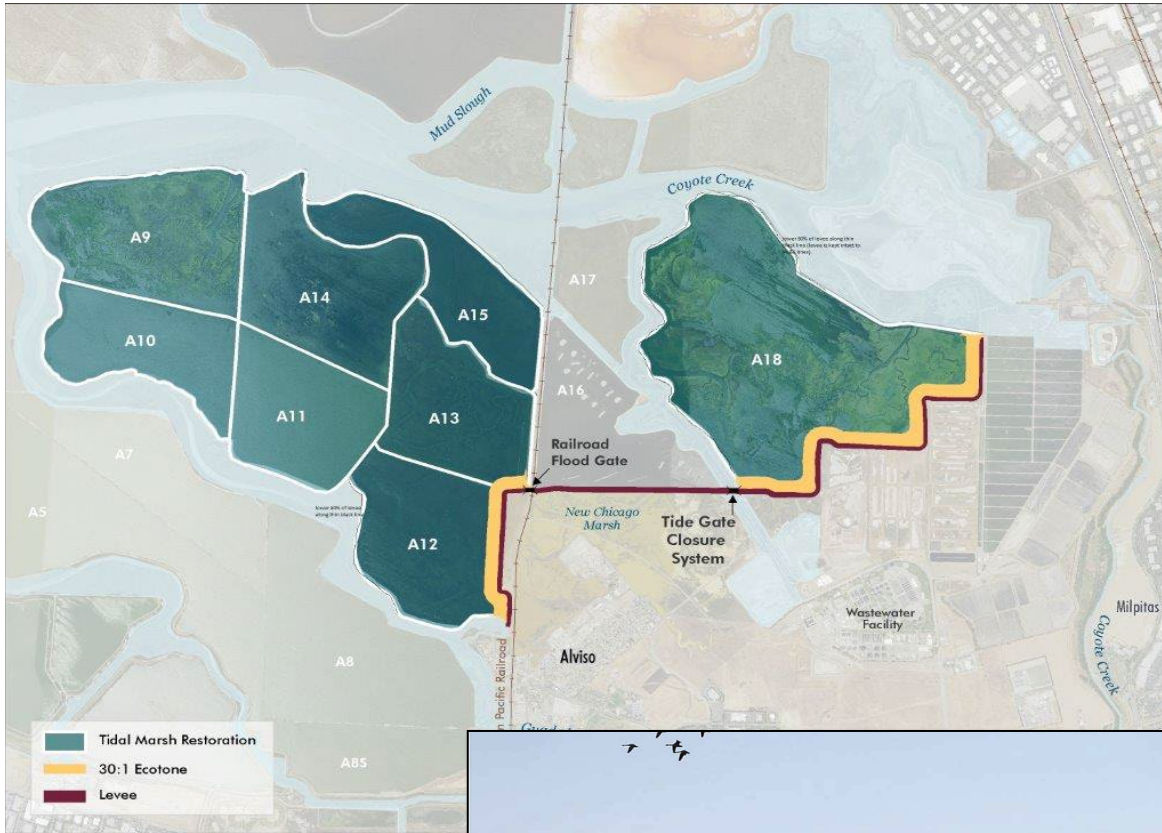
Interim Conditions:  
Marsh Construction  
(Phase 3)



Final Conditions  
(Phase 4)



# Restoring Habitat Protecting Communities



# Subtidal Actions



# Piloting Living Seawalls



Credit: C. Knapp, Smithsonian Environmental Research Center



# San Francisco Bay Sediment for Wetland Adaptation Project

[bcdc.ca.gov/wp-  
content/uploads/sites/354/20  
24/11/SWAP-BRU-Action-  
Plan-Draft.pdf](https://www.bcdc.ca.gov/wp-content/uploads/sites/354/2024/11/SWAP-BRU-Action-Plan-Draft.pdf)



SF Bay Conservation and Development Commission  
Regional Sediment Management Program



# Sediment for Wetland Adaptation Project



**Goal:** Increase beneficial reuse of sediment and soil for wetland habitat restoration, resilience, and sea level rise adaptation in the San Francisco Bay Area.



Questions / Discussion  
[brenda.goeden@bcfdc.ca.gov](mailto:brenda.goeden@bcfdc.ca.gov)  
415.352.3623

