



# Oakland Alameda Adaptation Committee (OAAC)

November 2024



## Background: Multiple Hazards

- Sea level rise
- Groundwater rise
- Winter storms
- Liquefaction



# Background: Sea Level Rise Adaptation

## Near Term

2080

35 to 50-year adaptation project lifespan

2 feet of sea level rise

Protect to elevation +14.0

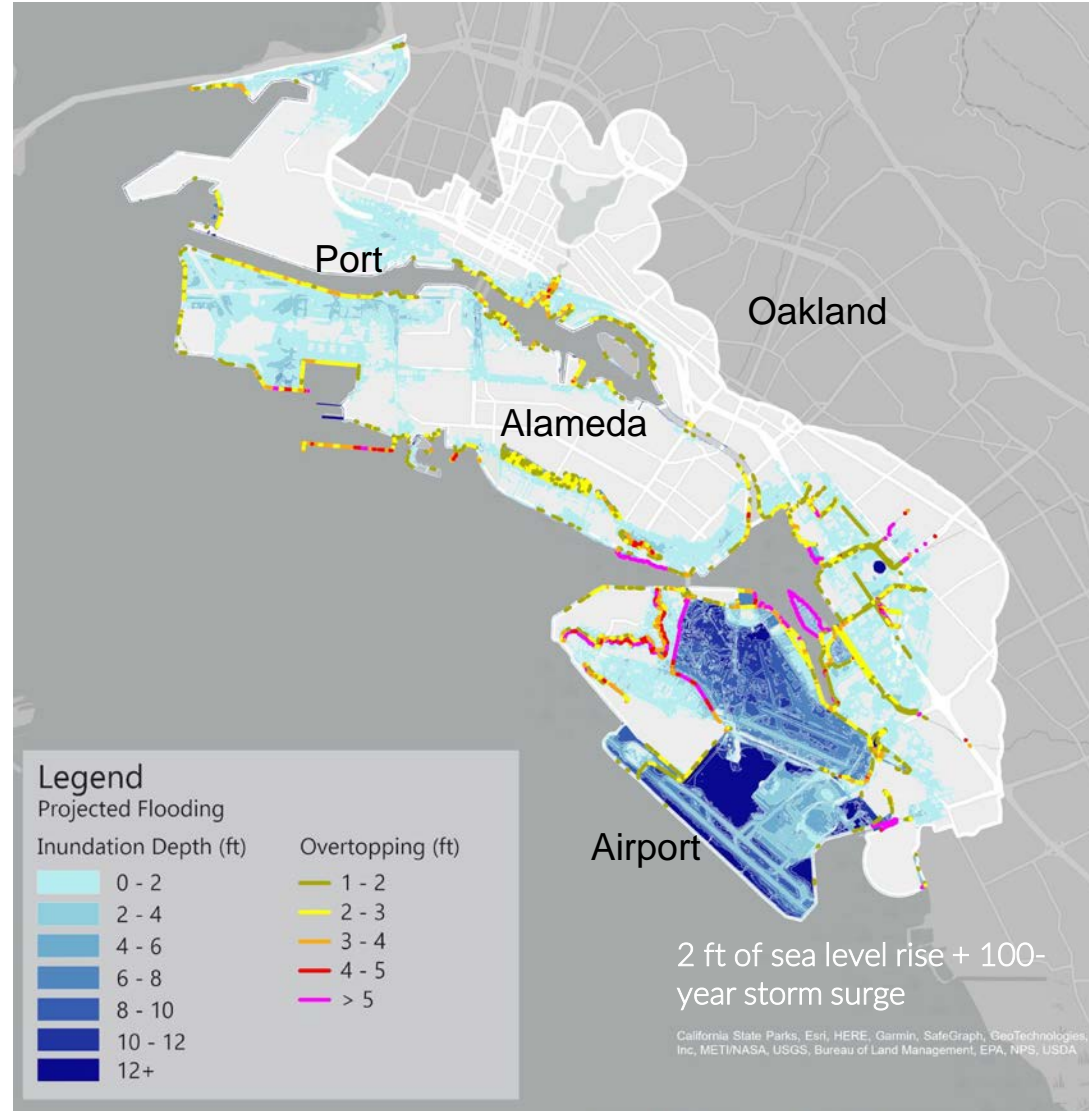
## Long Term

2100+

Build upon near term project

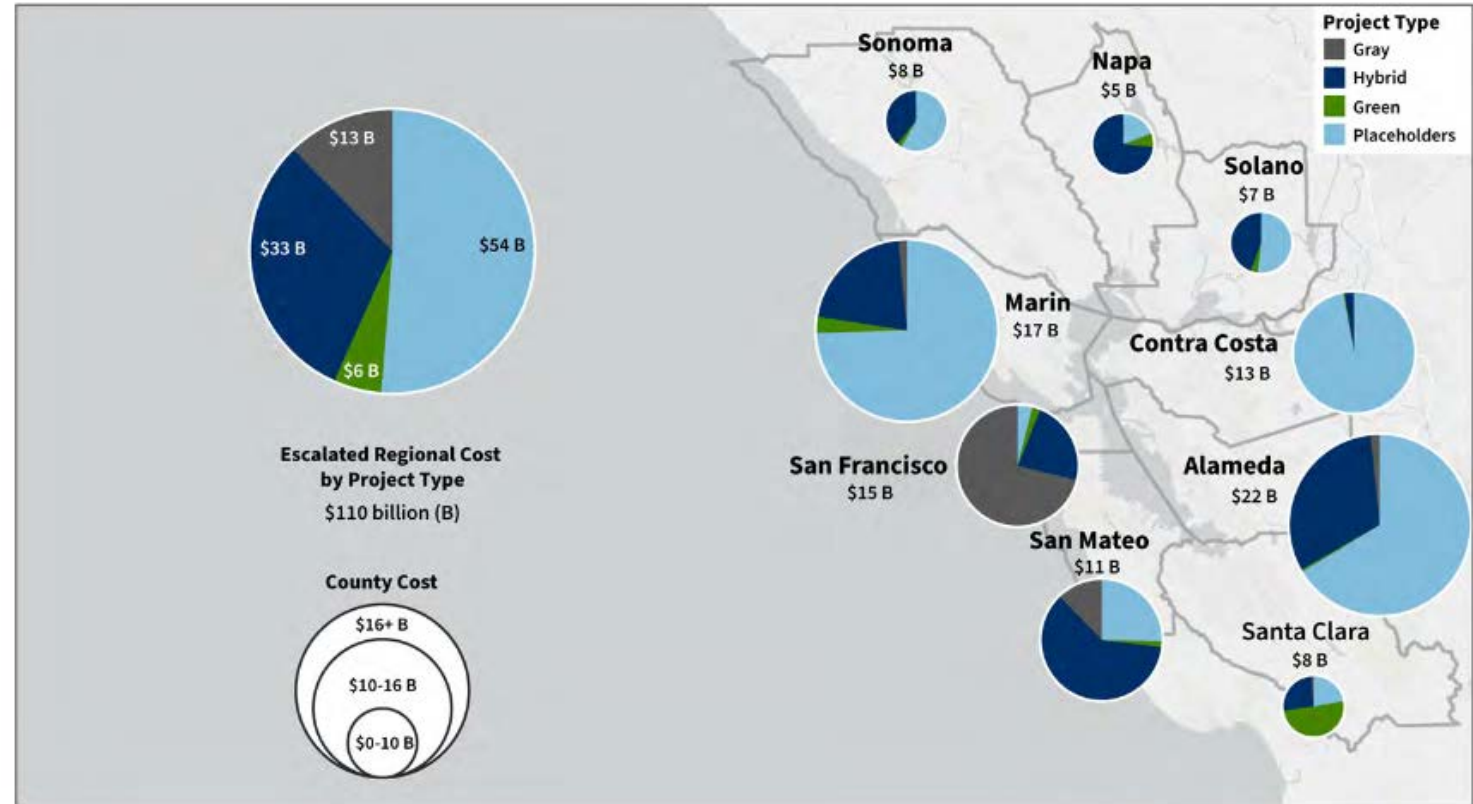
5 feet of sea level rise

Protect to elevation +17.0



# Background: Lack of Funding

- \$110B needed for region
- \$5.5B existing revenue
- Need for federal funding and new revenue



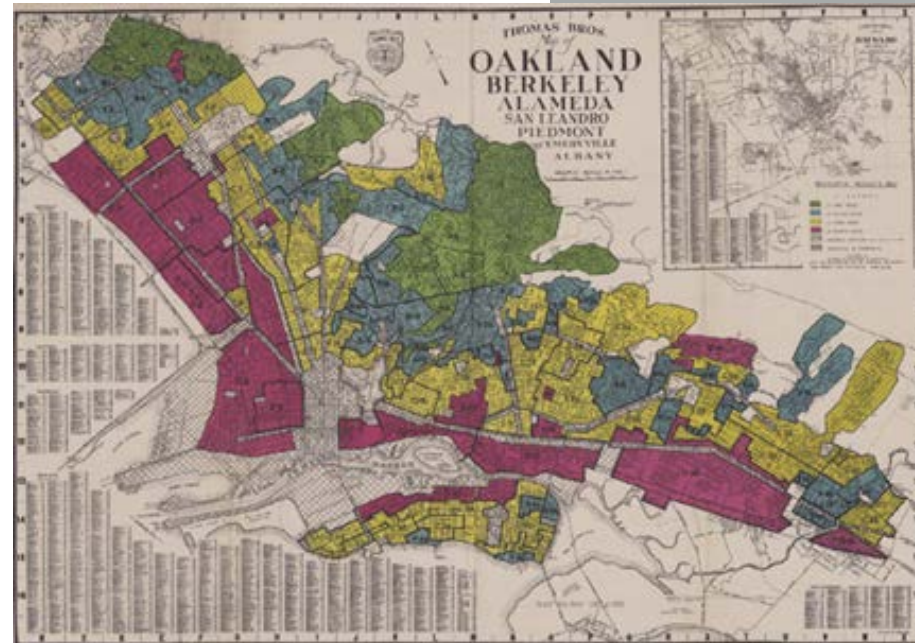
Funding Need Estimates by Project Type (2050).

Source: BCDC Adaptation Funding and Investment Framework (2022)



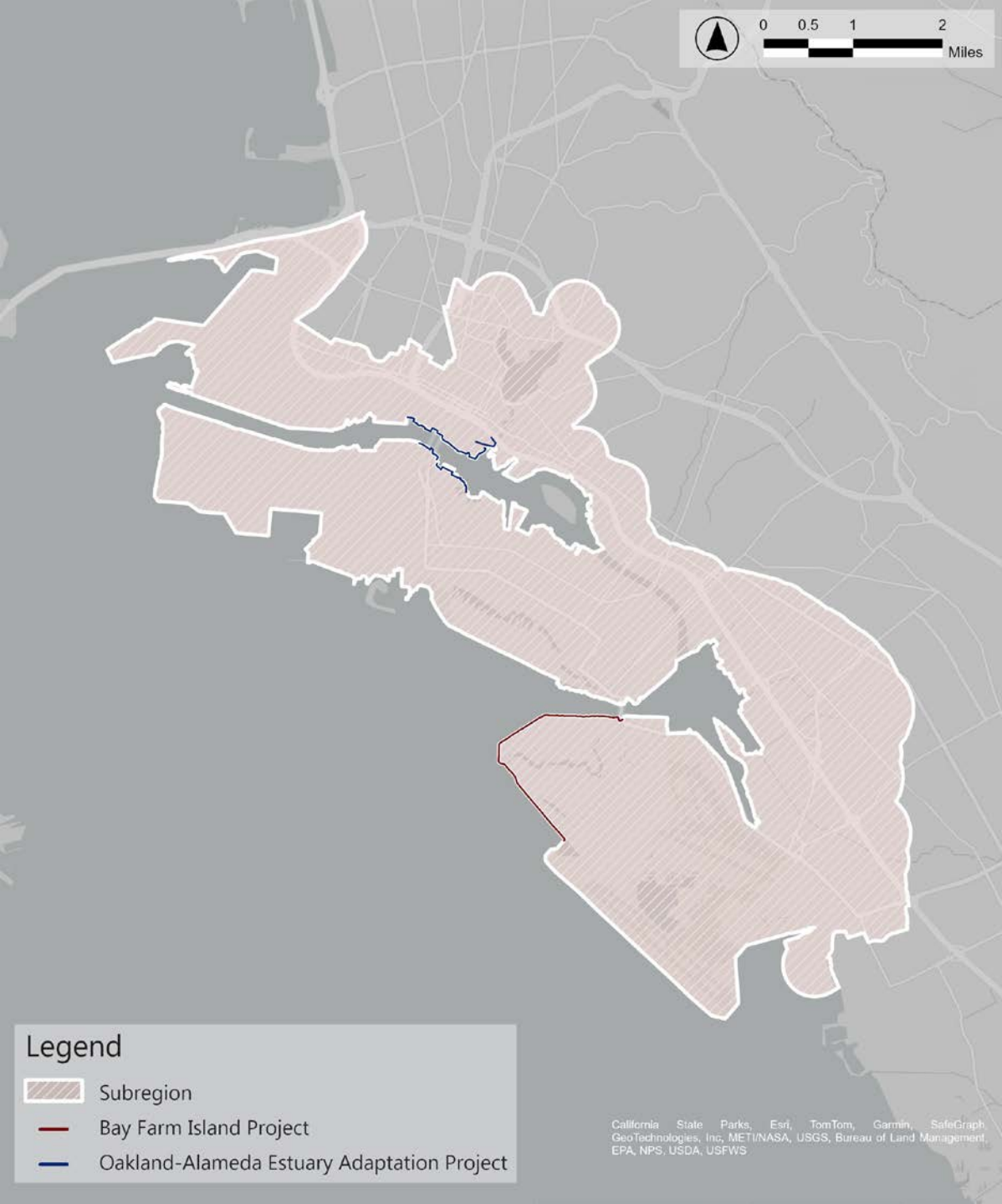
# Background: Vulnerable Communities

- Acknowledge injustices and collective loss
- Consider who will suffer and who could lose out
- Address today's issues and community priorities



California State Parks, Esri, HERE, Garmin, SafeGraph, GeoTechnologies, Inc., METI/NASA, USGS, Bureau of Land Management, EPA, NPS, USDA





The **Oakland Alameda Adaptation Committee (OAAC)** coordinates flood and sea level rise adaptation projects to protect and restore water quality, habitat, recreation and community resilience for the Oakland Alameda subregion.



# Benefits of Subregional Solutions

- Water does not respect jurisdictional boundaries
- Collaborating not competing
- Expedited and consensus-driven
- Increases grant funding
- Allows for prioritized state funding due to SB 272



# OAAC: Project Partners

## Agencies



**PORT OF OAKLAND**  
Seaport. Airport. Everyone's Port.



## Community Partners



**SOGOREA TE' LAND TRUST**  
LED BY URBAN INDIGENOUS WOMEN





# OAAC: Funded Projects (2023-2025)

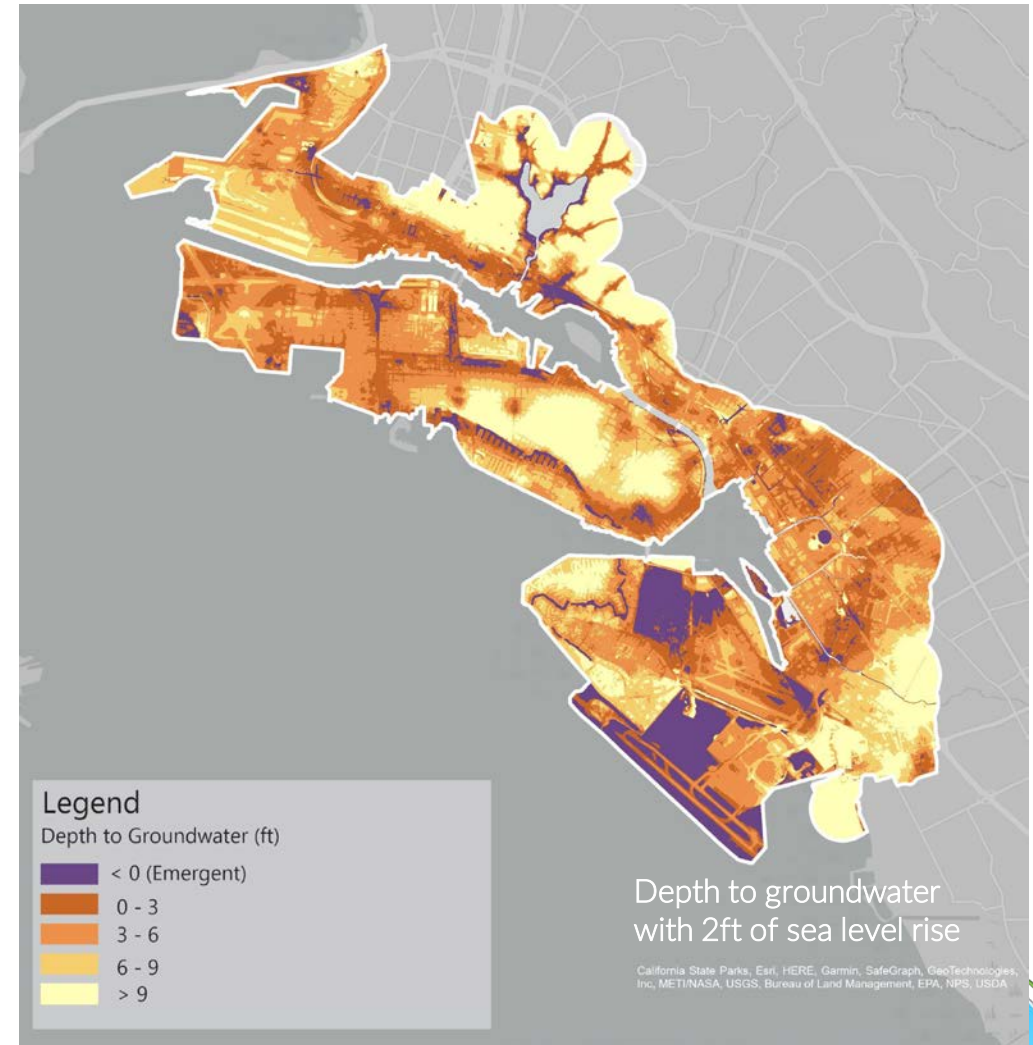
Project Description	Funding
<b>Subregional Adaptation Plan</b> <a href="http://www.alamedaca.gov/AdaptationLongTermPlan">www.alamedaca.gov/AdaptationLongTermPlan</a>	\$840,000
<b>Oakland-Alameda Estuary Adaptation Project</b> <a href="http://www.alamedaca.gov/AdaptationEstuary">www.alamedaca.gov/AdaptationEstuary</a>	\$500,000
<b>Bay Farm Island Adaptation Project</b> <a href="http://www.alamedaca.gov/AdaptationBayFarmIsland">www.alamedaca.gov/AdaptationBayFarmIsland</a>	\$2,030,000
<b>Total</b>	<b>\$3.37 million</b>



# Subregional Adaptation Plan

- **Purpose:** Identify actions over time as shoreline changes to protect communities
- **Tasks:**
  - Assessments and governance (2024)
  - Outreach (2024 & 2025)
  - Strategies (mid-2025)
  - City Council approval (fall 2025)
- **Budget:** \$840,000
- Required by SB 272 – BCDC RSAP

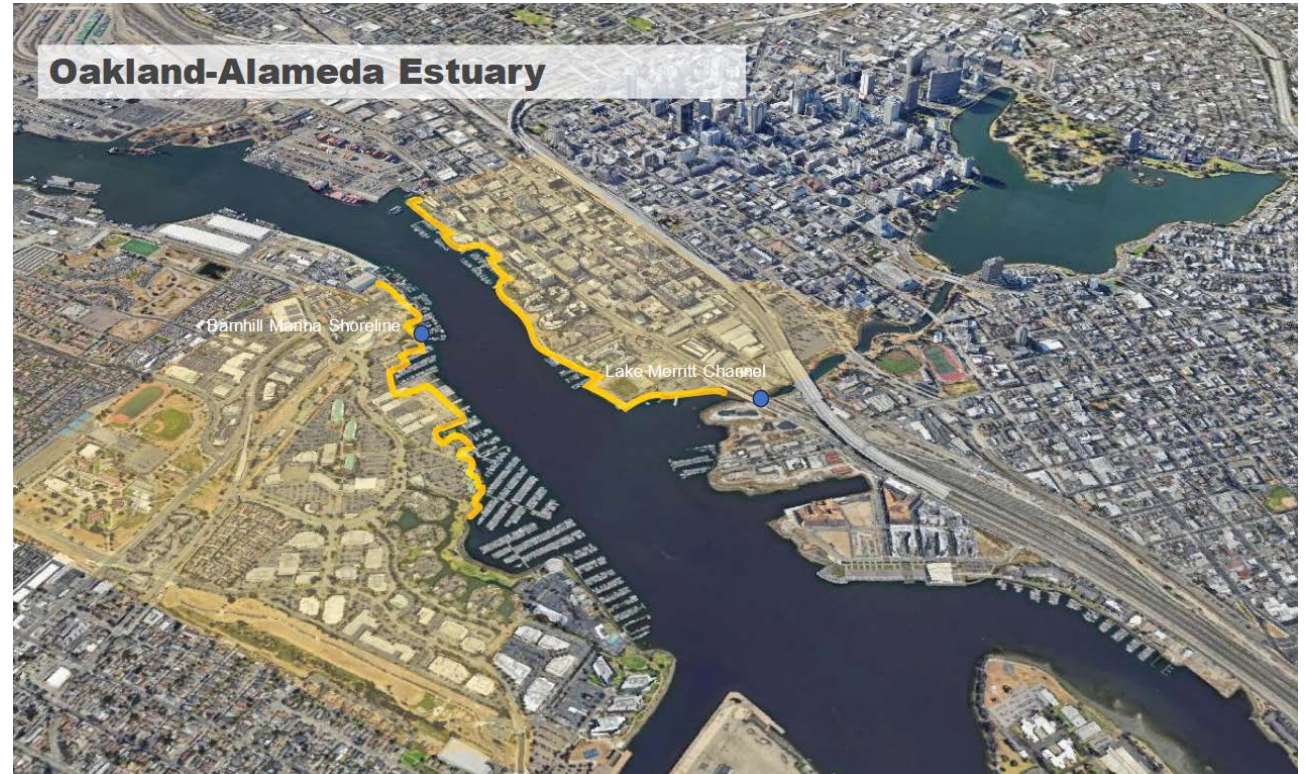
[www.alamedaca.gov/AdaptationLongTermPlan](http://www.alamedaca.gov/AdaptationLongTermPlan)



# Oakland-Alameda Estuary Adaptation Project

- **Purpose:** Develop concept design to protect Jack London District and Posey-Webster Tubes
- **Tasks:**
  - Outreach (2024)
  - Concept design (late 2024)
  - City Council approval (Jan. 2025)
- **Budget:** \$500,000
- **Next steps:** WRDA & earmark

[www.alamedaca.gov/AdaptationEstuary](http://www.alamedaca.gov/AdaptationEstuary)



# Bay Farm Island Adaptation Project

- **Purpose:** Develop design for near-term fixes at northern waterfront and long-term plan for entire Bay Farm Island
- **Tasks:**
  - Alternatives (spring 2024)
  - Draft design (fall 2024)
  - Outreach (2024 & 2025)
  - City Council approval (2025)
- **Budget:** \$2 million (Congresswoman Barbara Lee federal earmark)
- **Next steps:** BRIC grant

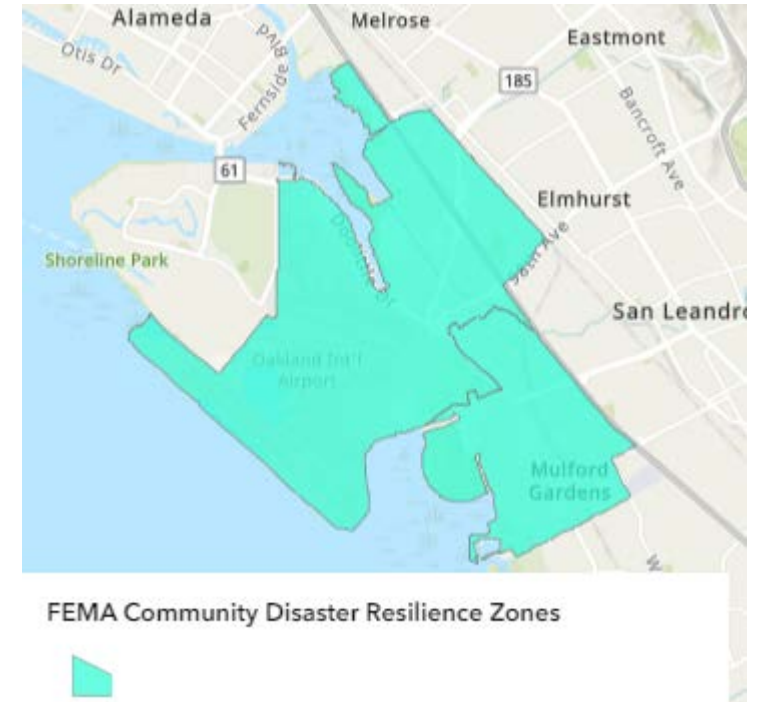
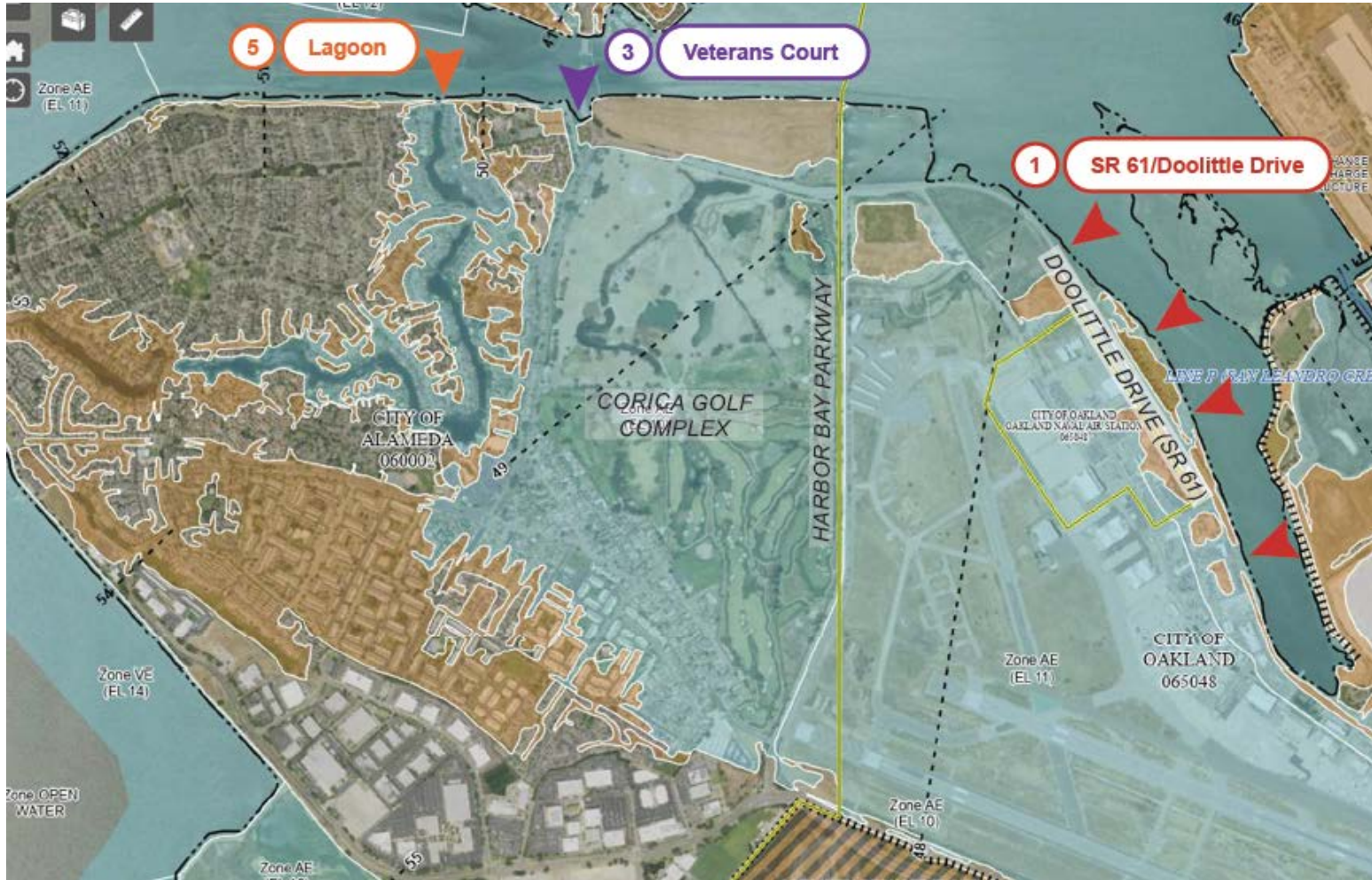


FEMA

[www.alamedaca.gov/AdaptationBayFarmIsland](http://www.alamedaca.gov/AdaptationBayFarmIsland)



# Bay Farm Island Adaptation Project



# BFI Project: FEMA BRIC Grant Request



**BRIC federal: \$50 m (90%)**

**Non-federal: \$5.5 m (10%)**

**Total: \$55.5 m**

**Recommended for further review by FEMA**

**Start: 2025?**

**Construction: 2028?**



# Adaptation: Next Steps

- 2024: Alternatives & Outreach
- 2025:
  - Finalize Concept Designs & Plan
  - Approve Concept Designs & Plan
  - Formalize Governance
- 2025-2030: Design & Construction (**pending funding**)



Learn more:

[www.alamedaca.gov/OaklandAlamedaAdaptationCommittee](http://www.alamedaca.gov/OaklandAlamedaAdaptationCommittee)

